

# Stress could break our heart

## A study examining the influence of gender on the interaction of heart and brain

### Who can participate to this study?

**Healthy** volunteers, **women and men**

Aged between **50 and 75** (women must be in the postmenopausal state)

### How does it function?

Selected participants will be asked to stay at the **University Hospital Zurich, Schlieren** for a study duration of approximately **5.5 hours**.

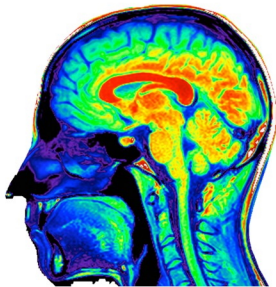
During this time the following examinations will be made:

General clinical examination and completion of questionnaires on general situation, daily stress and psychosocial situation, blood tests and imaging procedures.

### As compensation for the time spent, participants will receive:

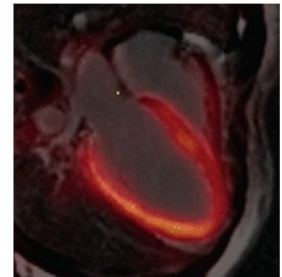
250 CHF

Snacks and refreshments



### Where?

University Hospital Zurich  
Department of Nuclear Medicine  
Wagistrasse 14, CH-8952  
Schlieren



**If you would like more information, please call or email a member of the study team:**

**E-Mail:** [herzforschung@usz.ch](mailto:herzforschung@usz.ch)

**Tel:** +41 (0)44 255 29 28

Contacting us only means interest in further information, but does not bind you to participate.